

承座銷 · 銷型

EH 22680.

產品描述

適合作為實心且精密的底座元件及止動元件，而梢狀型式的此種定位梢，可應用於定位點窄小的元件中。

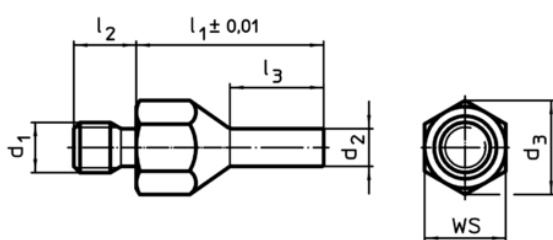
表面感應硬化和地面

材質

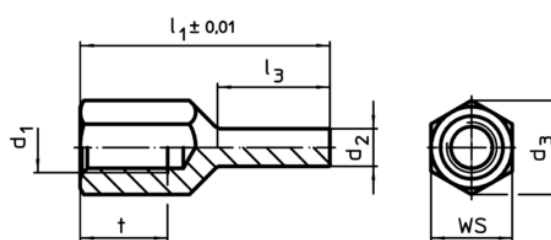
- 鋼，熱處理， 染黑



圖面



picture 1



picture 2

訂單資訊

l_1 $\pm 0,01$	d_1	d_2	尺寸 [mm]				WS [mm]	起動 扭力 max. [Nm]	 [g]	RoHS	REACH	品號
			l_2	l_3	t	d_3						
有公牙 – 相片 1												
20	M 6	4	8	10,0	–	11,0	10	7	8	RoHS 認證	contains no SVHC materials	22680.0402
30	M 6	4	8	15,0	–	11,0	10	7	12	RoHS 認證	contains no SVHC materials	22680.0404
30	M 8	4	10	15,0	–	14,4	13	18	17	RoHS 認證	contains no SVHC materials	22680.0412
40	M 8	4	10	20,0	–	14,4	13	18	23	RoHS 認證	contains no SVHC materials	22680.0414
30	M 8	6	10	15,0	–	14,4	13	18	20	RoHS 認證	contains no SVHC materials	22680.0416
40	M 8	6	10	20,0	–	14,4	13	18	27	RoHS 認證	contains no SVHC materials	22680.0418
30	M10	6	14	15,0	–	19,0	17	32	30	RoHS 認證	contains no SVHC materials	22680.0422
50	M10	6	14	25,0	–	19,0	17	32	51	RoHS 認證	contains no SVHC materials	22680.0424
30	M10	8	14	15,0	–	19,0	17	32	35	RoHS 認證	contains no SVHC materials	22680.0426
50	M10	8	14	25,0	–	19,0	17	32	58	RoHS 認證	contains no SVHC materials	22680.0428
40	M12	6	14	20,0	–	21,2	19	60	48	RoHS 認證	contains no SVHC materials	22680.0432
60	M12	6	14	30,0	–	21,2	19	60	75	RoHS 認證	contains no SVHC materials	22680.0434
40	M12	8	14	20,0	–	21,2	19	60	56	RoHS 認證	contains no SVHC materials	22680.0436
60	M12	8	14	30,0	–	21,2	19	60	83	RoHS 認證	contains no SVHC materials	22680.0438

l ₁ ±0,01	d ₁	d ₂	尺寸 [mm]				WS [mm]	起動扭力 max. [Nm]	 [g]	RoHS	REACH	品號
			l ₂	l ₃	t	d ₃						
有母牙 - 相片 2												
20	M 6	4	-	8,5	6	11,0	10	7	6	RoHS 認證	contains no SVHC materials	22680.0452
30	M 6	4	-	13,5	9	11,0	10	7	9	RoHS 認證	contains no SVHC materials	22680.0454
30	M 8	4	-	13,0	10	14,4	13	18	13	RoHS 認證	contains no SVHC materials	22680.0462
40	M 8	4	-	18,0	14	14,4	13	18	18	RoHS 認證	contains no SVHC materials	22680.0464
30	M 8	6	-	13,0	10	14,4	13	18	16	RoHS 認證	contains no SVHC materials	22680.0466
40	M 8	6	-	18,0	14	14,4	13	18	21	RoHS 認證	contains no SVHC materials	22680.0468
30	M10	6	-	12,0	10	19,0	17	32	24	RoHS 認證	contains no SVHC materials	22680.0472
50	M10	6	-	25,0	15	19,0	17	32	38	RoHS 認證	contains no SVHC materials	22680.0474
30	M10	8	-	12,0	10	19,0	17	32	28	RoHS 認證	contains no SVHC materials	22680.0476
50	M10	8	-	25,0	15	19,0	17	32	44	RoHS 認證	contains no SVHC materials	22680.0478
40	M12	6	-	18,0	12	21,2	19	60	36	RoHS 認證	contains no SVHC materials	22680.0482
60	M12	6	-	28,0	18	21,2	19	60	56	RoHS 認證	contains no SVHC materials	22680.0484
40	M12	8	-	18,0	12	21,2	19	60	41	RoHS 認證	contains no SVHC materials	22680.0486
60	M12	8	-	28,0	18	21,2	19	60	63	RoHS 認證	contains no SVHC materials	22680.0488

應用範例

