

推力螺絲·含銅柱 EH 22760.



產品描述

推力螺絲可被用於螺紋主軸，軸和表面處理工件的和緩夾持或下壓。

材質

墊

- 黃銅

螺絲

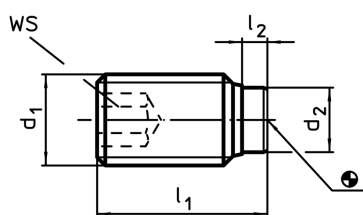
- 鋼，熱處理， $1200 \pm 100 \text{ N/mm}^2$
- 不鏽鋼 1.4305

更多資訊

更多產品


- 推力螺絲，帶有塑膠襯墊

圖面



訂單資訊

尺寸				WS	🌡️	📦	RoHS	REACH	品號
d ₁	l ₁	l ₂	d ₂	[mm]	max. [°C]	[g]			
熱處理鋼									
M 3	5,0	1,0	1,5	1,5	250	0,2	RoHS 認證	contains SVHC materials >0.1% w/w	22760.0032
M 3	7,5	1,0	1,5	1,5	250	0,3	RoHS 認證	contains SVHC materials >0.1% w/w	22760.0034
M 3	10,0	1,0	1,5	1,5	250	0,5	RoHS 認證	contains SVHC materials >0.1% w/w	22760.0036
M 4	5,0	1,0	2,5	2,0	250	0,3	RoHS 認證	contains SVHC materials >0.1% w/w	22760.0040
M 4	6,5	1,2	2,5	2,0	250	0,3	RoHS 認證	contains SVHC materials >0.1% w/w	22760.0042
M 4	10,5	1,2	2,5	2,0	250	0,8	RoHS 認證	contains SVHC materials >0.1% w/w	22760.0044
M 4	16,5	1,2	2,5	2,0	250	1,2	RoHS 認證	contains SVHC materials >0.1% w/w	22760.0046
M 5	6,0	1,0	3,0	2,5	250	0,6	RoHS 認證	contains SVHC materials >0.1% w/w	22760.0050
M 5	8,5	1,3	3,0	2,5	250	0,9	RoHS 認證	contains SVHC materials >0.1% w/w	22760.0052
M 5	12,5	1,3	3,0	2,5	250	1,4	RoHS 認證	contains SVHC materials >0.1% w/w	22760.0054

d ₁	尺寸			WS [mm]	max. [°C]	 [g]	RoHS	REACH	品號
	l ₁	l ₂	d ₂						
[mm]									
M 5	20,5	1,3	3,0	2,5	250	2,1	RoHS 認證	contains SVHC materials >0.1% w/w	22760.0056
M 6	6,0	1,0	4,0	3,0	250	0,9	RoHS 認證	contains SVHC materials >0.1% w/w	22760.0060
M 6	11,5	1,9	4,0	3,0	250	1,7	RoHS 認證	contains SVHC materials >0.1% w/w	22760.0062
M 6	17,5	1,9	4,0	3,0	250	2,7	RoHS 認證	contains SVHC materials >0.1% w/w	22760.0064
M 6	26,5	1,9	4,0	3,0	250	4,2	RoHS 認證	contains SVHC materials >0.1% w/w	22760.0066
M 8	8,0	1,4	5,5	4,0	250	2,2	RoHS 認證	contains SVHC materials >0.1% w/w	22760.0080
M 8	12,0	2,5	5,5	4,0	250	3,0	RoHS 認證	contains SVHC materials >0.1% w/w	22760.0082
M 8	22,0	2,5	5,5	4,0	250	5,8	RoHS 認證	contains SVHC materials >0.1% w/w	22760.0086
M 8	32,0	2,5	5,5	4,0	250	8,9	RoHS 認證	contains SVHC materials >0.1% w/w	22760.0088
M10	10,0	1,5	7,0	5,0	250	4,3	RoHS 認證	contains SVHC materials >0.1% w/w	22760.0100
M10	14,0	2,7	7,0	5,0	250	5,6	RoHS 認證	contains SVHC materials >0.1% w/w	22760.0102
M10	18,0	2,7	7,0	5,0	250	6,7	RoHS 認證	contains SVHC materials >0.1% w/w	22760.0104
M10	27,0	2,7	7,0	5,0	250	11,0	RoHS 認證	contains SVHC materials >0.1% w/w	22760.0106
M10	37,0	2,7	7,0	5,0	250	16,0	RoHS 認證	contains SVHC materials >0.1% w/w	22760.0108
M12	12,0	1,5	8,5	6,0	250	7,5	RoHS 認證	contains SVHC materials >0.1% w/w	22760.0120
M12	18,5	3,4	8,5	6,0	250	10,0	RoHS 認證	contains SVHC materials >0.1% w/w	22760.0122
M12	22,5	3,4	8,5	6,0	250	12,0	RoHS 認證	contains SVHC materials >0.1% w/w	22760.0124
M12	32,5	3,4	8,5	6,0	250	20,0	RoHS 認證	contains SVHC materials >0.1% w/w	22760.0126
M12	42,5	3,4	8,5	6,0	250	27,0	RoHS 認證	contains SVHC materials >0.1% w/w	22760.0128
不銹鋼									
M 3	5,0	1,0	1,5	1,5	250	0,2	RoHS 認證	contains SVHC materials >0.1% w/w	22760.0432
M 3	7,5	1,0	1,5	1,5	250	0,3	RoHS 認證	contains SVHC materials >0.1% w/w	22760.0434
M 3	10,0	1,0	1,5	1,5	250	0,5	RoHS 認證	contains SVHC materials >0.1% w/w	22760.0436

d ₁	尺寸			WS [mm]	max. [°C]	[g]	RoHS	REACH	品號
	l ₁	l ₂	d ₂						
[mm]									
M 4	6,5	1,2	2,5	2,0	250	0,3	RoHS 認證	contains SVHC materials >0.1% w/w	22760.0442
M 4	10,5	1,2	2,5	2,0	250	0,8	RoHS 認證	contains SVHC materials >0.1% w/w	22760.0444
M 4	16,5	1,2	2,5	2,0	250	1,2	RoHS 認證	contains SVHC materials >0.1% w/w	22760.0446
M 5	8,5	1,3	3,0	2,5	250	0,9	RoHS 認證	contains no SVHC materials	22760.0452
M 5	12,5	1,3	3,0	2,5	250	1,4	RoHS 認證	contains no SVHC materials	22760.0454
M 5	20,5	1,3	3,0	2,5	250	2,1	RoHS 認證	contains no SVHC materials	22760.0456
M 6	11,5	1,9	4,0	3,0	250	1,7	RoHS 認證	contains no SVHC materials	22760.0462
M 6	17,5	1,9	4,0	3,0	250	2,7	RoHS 認證	contains no SVHC materials	22760.0464
M 6	26,5	1,9	4,0	3,0	250	4,2	RoHS 認證	contains no SVHC materials	22760.0466
M 8	12,0	2,5	5,5	4,0	250	3,0	RoHS 認證	contains no SVHC materials	22760.0482
M 8	22,0	2,5	5,5	4,0	250	5,8	RoHS 認證	contains no SVHC materials	22760.0486
M 8	32,0	2,5	5,5	4,0	250	8,9	RoHS 認證	contains no SVHC materials	22760.0488
M10	14,0	2,7	7,0	5,0	250	5,6	RoHS 認證	contains no SVHC materials	22760.0502
M10	18,0	2,7	7,0	5,0	250	6,7	RoHS 認證	contains no SVHC materials	22760.0504
M10	27,0	2,7	7,0	5,0	250	11,0	RoHS 認證	contains no SVHC materials	22760.0506
M10	37,0	2,7	7,0	5,0	250	16,0	RoHS 認證	contains no SVHC materials	22760.0508
M12	18,5	3,4	8,5	6,0	250	10,0	RoHS 認證	contains no SVHC materials	22760.0522
M12	22,5	3,4	8,5	6,0	250	12,0	RoHS 認證	contains no SVHC materials	22760.0524
M12	32,5	3,4	8,5	6,0	250	20,0	RoHS 認證	contains no SVHC materials	22760.0526
M12	42,5	3,4	8,5	6,0	250	27,0	RoHS 認證	contains no SVHC materials	22760.0528

應用範例

